

The following are transport setting methods of X series MIDI keyboard :

Keyboard setting:

X mini series

- 1、 Change the transport controller into CC mode (blue back light) (Please refer the instruction for the operation in detail);



- 2、 Press and hold **SHIFT** button,press **CTRL CC** corresponding keys, press the button of **REWIND** transport controller, press **number 5,7** corresponding keys, press **ENTER** corresponding keys.;





- 3、 Press **CTRL CC** corresponding keys, press **forward** button of transport controller, press **number 5,8** corresponding keys, press **ENTER** corresponding keys.
- 4、 Press **CTRL CC** corresponding keys, press the **STOP** button of the transport controller, press number 5,9 corresponding keys, press **ENTER** corresponding keys.
- 5、 Press **CTRL CC** corresponding keys, press the **PLAY** button of the transport controller, press number 6,0 corresponding keys, press **ENTER** corresponding keys.
- 6、 Press **CTRL CC** corresponding keys, press the **CYCLE** button of the transport controller, press number 6,1 corresponding keys, press **ENTER** corresponding keys.
- 7、 Press **CTRL CC** corresponding keys, press the **RECORD** button of the transport controller, press number 6, 2 corresponding keys, press **ENTER** corresponding keys.
- 8、 Release the **SHIFT** button.

X6、X8

- 1、Light on the **MIDI / SELECT** button;



- 2、Press **CTRL CC** corresponding keys, press the **rewind** button of the transport controller, press the **numbers 5, 7** corresponding keys, press **ENTER** corresponding keys;



- 3、Press the **CTRL CC** corresponding key, press the **forward** button of the transport controller, press the **number 5,8** correspond to the key, press **ENTER** corresponding to the key;

4、 Press **CTRL CC** corresponding keys, press the **stop** button of the transport controller, press the **number 5,9** corresponding keys, press **ENTER** corresponding key;

5、 Press the **CTRL CC** corresponding keys, press the **play** button of the transport controller, press the **number 6,0** corresponding keys, press **ENTER** corresponding keys;

6、 press **CTRL CC** corresponding keys, press the **cycle** button of the transport controller, press the **number 6,1** corresponding keys, press **ENTER** corresponding keys;

7、 Press **CTRL CC** corresponding key, press the **record** button of the transport controller, press the **number 6,2** corresponding keys, press **ENTER** corresponding keys;

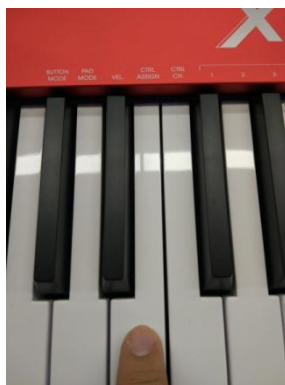
8、 Light off the **MIDI / SELECT** button

X6 pro、X8 pro

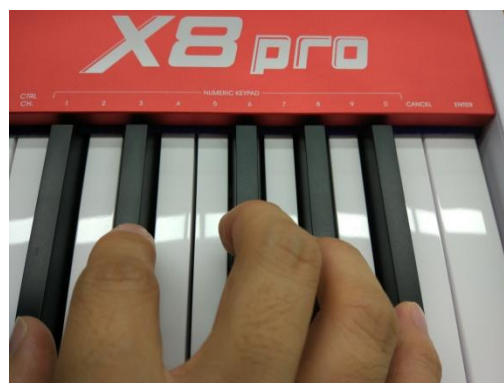
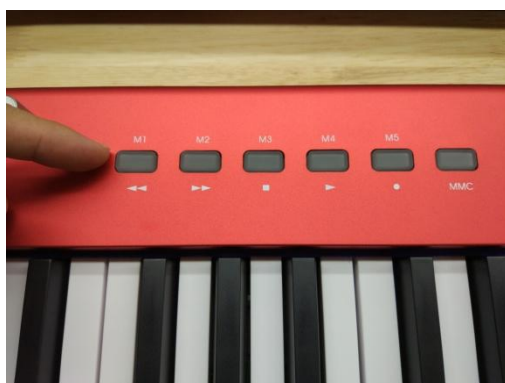
- 1、Light off **MMC** back light, to change the transport controller into CC mode (It is white back light after press);



- 2、Light on **MIDI/SELECT** button, press **CTRL ASSIGN** corresponding keys.



- 3、Press the **REWIND** button of the transport controller, press the **number 5,7** corresponding keys, press **ENTER** corresponding keys;



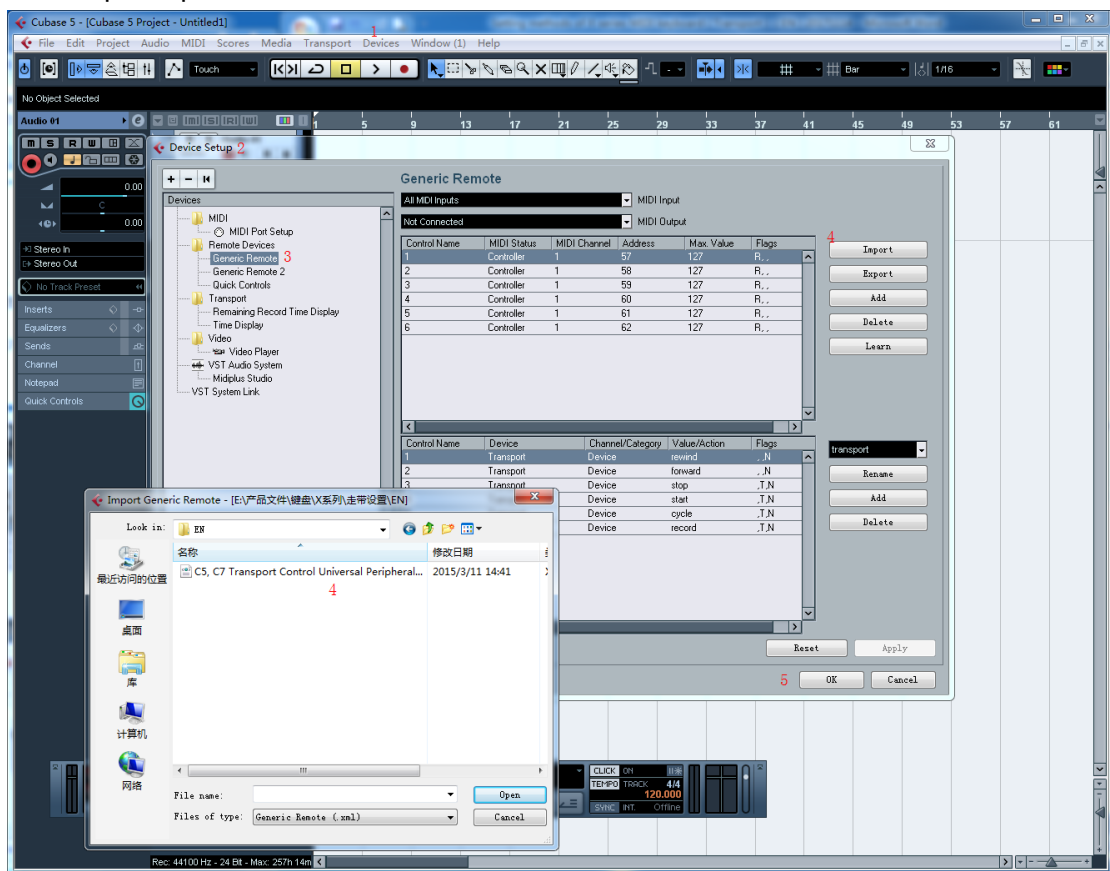
- 4、Press the **FORWARD** button of the transport controller, press the **number 5,8** corresponding keys, press **ENTER** corresponding keys;
- 5、Press the **STOP** button of the transport controller, press the **number 5,9** corresponding keys, press **ENTER** corresponding keys;

- 6、 Press the **PLAY** button of the transport controller, press the **number 6,0** corresponding keys, press **ENTER** corresponding keys;
- 7、 Press the **CYCLE** button of the transport controller, press the **number 6,1** corresponding keys, press **ENTER** corresponding keys;
- 8、 Press the **RECORD** button of the transport controller, press the **number 6,2** corresponding keys, press **ENTER** corresponding keys;
- 9、 Light off **MIDI/SELECT** button.

Host software (Cubase5) setting:

Method one :

- 1、connect X series keyboard;
- 2、click "Devices" in the CUBASE, select "Device Setep";
- 3、select "Generic Remote" from the left side of the dialog box, (if no, click "+" in the upper left corner), to ensure that "MIDI input" is X-series device;
- 4、Click the "Import" button on the right of the dialog box and select "C5, C7 Transport Control Universal Peripherals (X-Series Keyboard) .XML" file;
- 5、Setup complete.



Method Two:

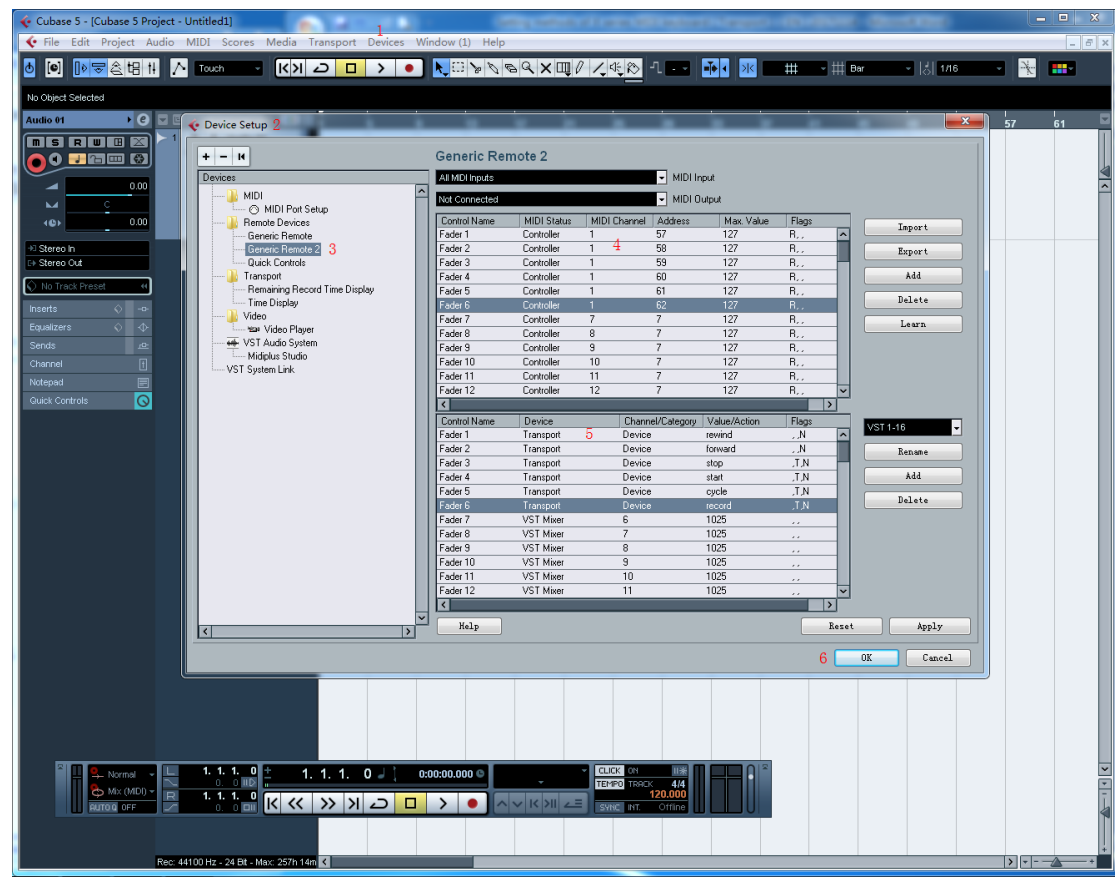
- 1、Connect X series keyboard;
- 2、Click the "device" from the CUBASE, select "equipment settings";
- 3、Select "Universal Peripherals" in the left side of the dialog box, (if no, click "+" in the upper left corner), to ensure that "MIDI Input" is equipment of X series (MIDI output can not be set);
- 4、The upper table of the dialog box :

- (1) In the **Fader1** column, MIDI Status is "**Controller**", MIDI Channel is "**1**", Address is "**57**", Max Value is "**127**" and Flags is "**Receive**".
- (2) In the **Fader2** column, MIDI Status is "**Controller**", MIDI Channel is "**1**", Address is "**58**", Max Value is "**127**" and Flags is "**Receive**";
- (3) In the **Fader3** column, MIDI Status is "**Controller**", MIDI Channel is "**1**", Address is "**59**", Max Value is "**127**" and Flags is "**Receive**".
- (4) In the **Fader4** column, MIDI Status is "**Controller**", MIDI Channel is "**1**", Address is "**60**", Max Value is "**127**" and Flags is "**Receive**".
- (5) In the **Fader5** column, MIDI Status is "**Controller**", MIDI Channel is "**1**", Address is "**61**", Max Value is "**127**" and Flags is "**Receive**".
- (6) In the **Fader6** column, MIDI Status is "**Controller**", MIDI Channel is "**1**", Address is "**62**", Max Value is "**127**" and Flags is "**Receive**".

5、The lower table of the dialog box:

- (1) In the **Fader1** column, Device is "**Transport**", Channel / Category is "**Device**", Value / Action is "**rewind**", and Flags is "**Not Automated**".
- (2) In the **Fader2** column, Device is "**Transport**", Channel / Category is "**Device**", Value / Action is "**forward**", and Flags is "**Not Automated**".
- (3) In the **Fader3** column, Device is "**Transport**", Channel / Category is "**Device**", Value / Action is "**stop**", and Flags is "**Toggle,Not Automated**".
- (4) In the **Fader4** column, Device is "**Transport**", Channel / Category is "**Device**", Value / Action is "**start**", and Flags is "**Toggle,Not Automated**".
- (5) In the **Fader5** column, Device is "**Transport**", Channel / Category is "**Device**", Value / Action is "**cycle**", and Flags is "**Toggle,Not Automated**".
- (6) In the **Fader6** column, Device is "**Transport**", Channel / Category is "**Device**", Value / Action is "**record**", and Flags is "**Toggle,Not Automated**".

6、Click OK to complete the setup.



Host software (Ableton live) setting

Method one :

- 1、Connect X series keyboard;
- 2、Click the “MIDI” button in the upper right corner of the Ableton live interface,as shown in Figure 1.
- 3、All the buttons that can be controlled by the computer keyboard are colored, and the software transport control button can be found in the middle of the top position of interface(as shown in Figure2). Then use the mouse to click the "play" function of the transport button, and then press the corresponding function keys on the MIDI keyboard. (Note that the function should be corresponding) Other transport buttons set up as above, the successful setting will automatically indicate the corresponding number, as shown in Figure 3.
- 4、Click the “MIDI” button on the upper right corner of the interface and exit the colored interface,the setting is finished.

Figure 1:

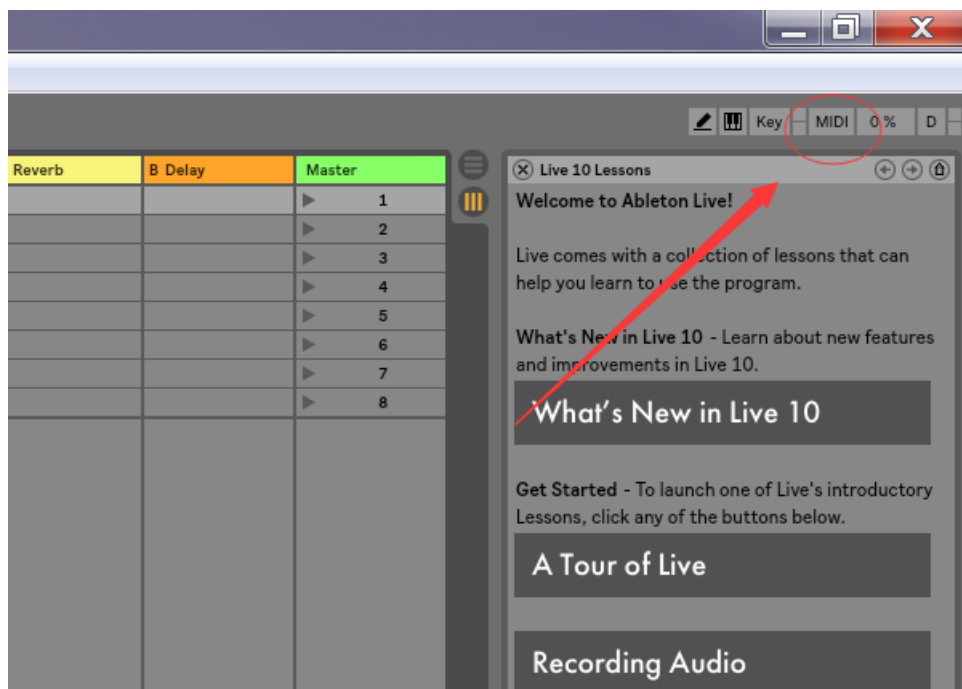


Figure2:

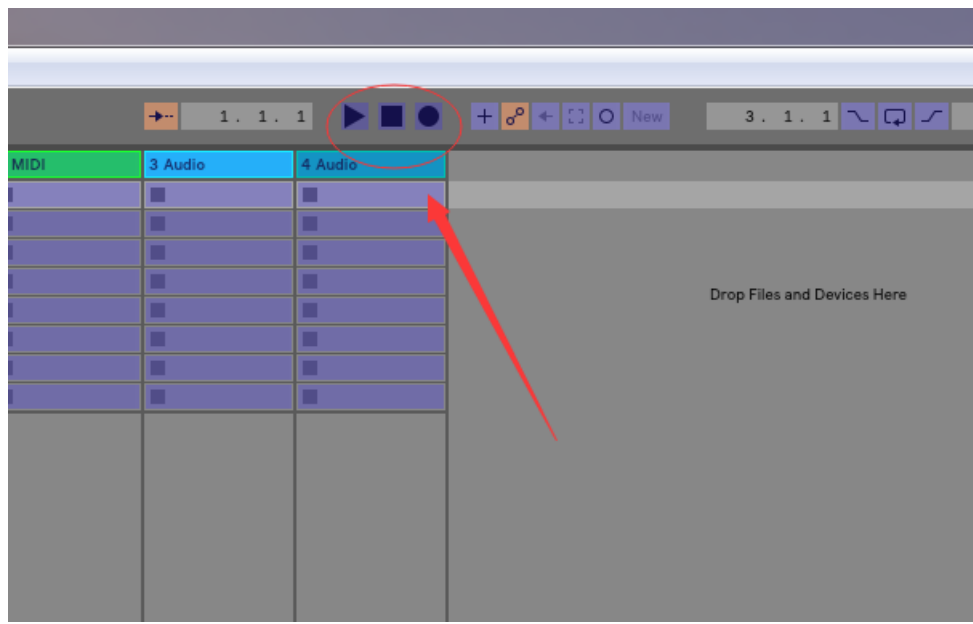


Figure3:

